



Electrolux

Modular Cooking Range Line 900XP 800 mm Open Base 1 Module

ITEM # _____

MODEL # _____

NAME # _____

SIS # _____

AIA # _____



Electrolux



Modular Cooking Range Line 900XP 800 mm Open Base 1 Module

391154 (E9BANH0000) 900XP Open Base 800 mm 1
module.

Short Form Specification

Item No. _____

To be installed below other 900XP top units in island type installations with operations from one side. Open base to store pots, pans, sheet pans etc. Body and internal structure of unit entirely in stainless steel. Delivered with 150 mm height adjustable feet.

Main Features

- Unit can be easily installed below other 900XP top models.
- Unit delivered with 50 mm height adjustable feet in Stainless steel.
- Open base compartment for storage of pots, pans, sheet pans, etc.
- Doors with handles, drawers, heating kits and runners for GN containers can be ordered separately.

Construction

- Constructed in Stainless steel with Scotch Brite finish to meet the highest hygiene standards.
- Unit is 930 mm deep to give a larger working surface area.

Optional Accessories

- Flanged feet kit PNC 206136
- 2 supports runners for open base cupboard 400mm for GN1/1 PNC 206145
- Kit 4 feet for concrete installation (not for 900 line free standing grill) PNC 206210

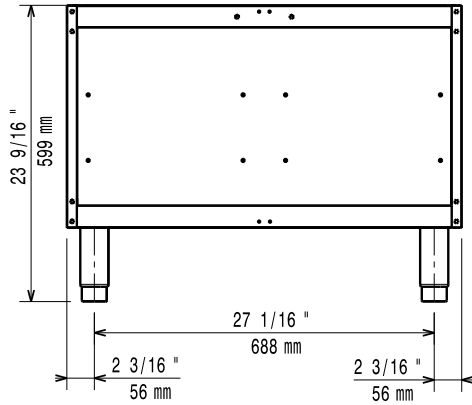
APPROVAL: _____



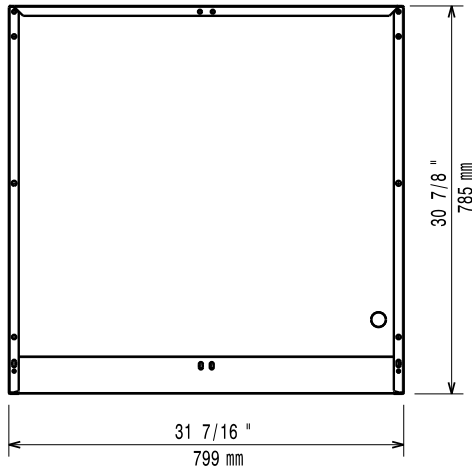
Electrolux

Modular Cooking Range Line 900XP 800 mm Open Base 1 Module

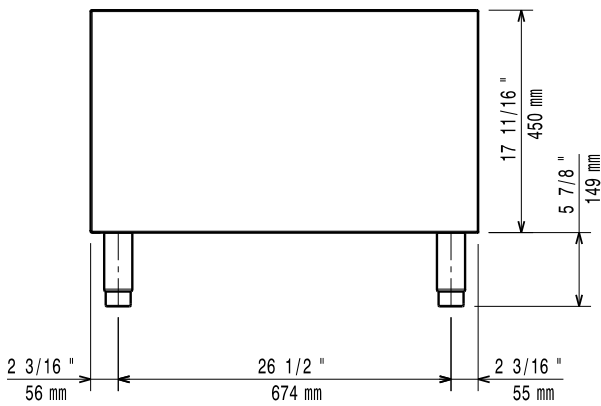
Front



Top



Side



Modular Cooking Range Line
900XP 800 mm Open Base 1 Module

The company reserves the right to make modifications to the products without prior notice. All information correct at time of printing.

